

WIMATE AQUA MASTER

OPTIMISE AND CONTROL PUMP SYSTEMS

2024



CONTACT

No. 143/144, Ground Floor, Outer
Ring Rd, Kempegowda Layout,
Laggere, Bengaluru, Karnataka
560058

91 99000 87727

sapphire@fluidsystems.co.in



WIMATE AQUA MASTER BENIFITS:

VERSATILE MANAGEMENT

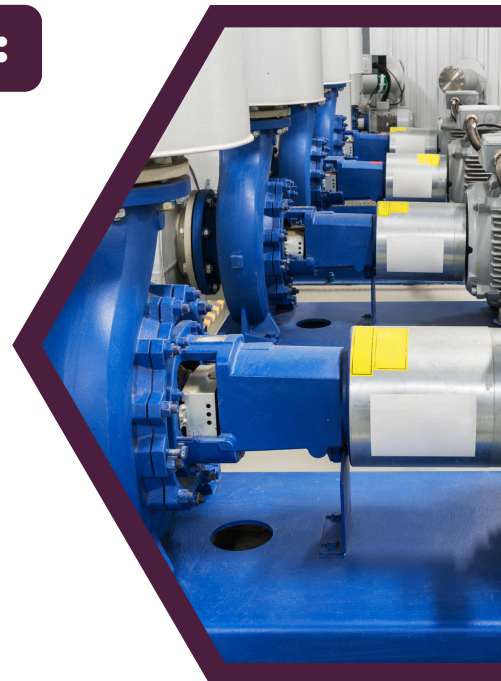
Supports single/ multiple VFD, VFD less and flood fighting systems, ensuring precise control and monitoring.

ACHIEVE OPERATIONAL EFFICIENCY

Optimizes energy use and enhances efficiency through seamless integration and robust features, reducing downtime and streamlining operations.

WIDE APPLICATIONS

Suitable for commercial, industrial, and emergency settings, including large buildings, water supply systems, residential complexes, and flood control.



FEATURES

1 MULTI-PUMP MANAGEMENT

Controls up to six pumps, ensuring efficient system operation and load distribution.

2 PRESSURE MAINTENANCE

Maintains water pressure automatically based on a set point for consistent supply.

3 CONTROL INTEGRATION

Supports RS485 and Analog Output for seamless control system integration.

4 OPERATIONAL MODES

Offers manual and automatic modes for flexible control and easy maintenance.

5 WEAR BALANCING

Uses standby and cyclic movement to extend pump lifespan.

6 SAFETY PROTECTIONS

Protects against pump tripping and dry run conditions, enhancing reliability.

7 BMS INTEGRATION

Easily integrates with Building Management Systems for centralized control.

8 OPTIONAL FEATURES

Includes options like hour meters, moisture sensors, and VFDs for customization.

9 FIRMWARE UPGRADE

Allows easy firmware upgrades using a USB pendrive.

10 EVENT LOGGING

Logs up to 100 events to identify reasons behind occurrences.

11 PANEL ENCLOSURES

Available in durable enclosures for various environmental conditions.

12 RICH USER INTERFACE

Features a comprehensive user interface